

for optimum viewing
go to the top
of your screen...
– View –
go to
– full screen –
use your arrows
to go forward
and backward...
escape will
bring you back



PANTONE

Fashion
Color Report
Spring 2004

Brought to you by:



685 Terrace Drive
San Dimas, CA 91773
Ph (909) 599-7954
Fx (909) 592-9976
www.perrycolorcard.com
pantone@perrycolorcard.com

Each season,
Pantone surveys
the designers of
New York Fashion Week
to find the most
directional colors.
This sketchbook
previews
their color
inspirations for
Spring 2004.

have fun with color

New York Fashion Week Spring 2004, September 12-19, 2003

New York designers have emerged from history's largest blackout with a kaleidoscopic bounty of feel-good color for Spring 2004. This season, designers looked to nature – from the garden to the desert and the beach – and came away with a true spring palette that is feminine, passionate, rejuvenating and energizing. With bold, saturated colors that would do Lilly Pulitzer proud, Spring 04 isn't for the wallflower, although it does offer its more demure options.

Coming off a very successful year, Pink – incarnated as innocent Peachskin, bold Fandango and racy Cayenne – has been dubbed the new Black. All shades of the sun – such as Cadmium Yellow – reflect off the cool Vista Blue and Dusted Peri waters of Capri and the French Riviera, while lush Tigerlily and wistful Lavendula echo not only their namesake flowers but the soft striations of the painted desert. Consistent with spring's perennial themes of growth and regeneration, Leaf Green is at once organic and optimistic, combining effortlessly with the season's flower garden hues for a look that is clean, fresh and youthful. This season's vibrant colors pair confidently with Plaza Taupe, spring's new neutral, for combinations that are crisp and modern.

"Color mixing is more obvious and dramatic than ever," observes Leatrice Eiseman, executive director, Pantone Color Institute®. "Evoking feelings of freedom, energy and excitement, it is an affirmation that there are better things to come. Spring 2004's color matching is playful, surprising, and above all, fun!"



PANTONE 17-1456
Tigerlily



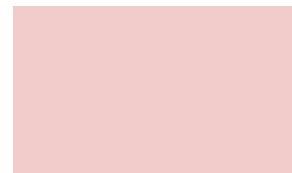
PANTONE 18-1651
Cayenne



PANTONE 17-2033
Fandango Pink



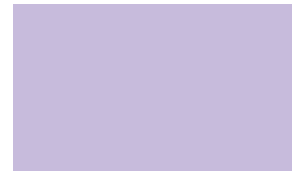
PANTONE 15-1054
Cadmium Yellow



PANTONE 14-1907
Peachskin



PANTONE 16-1105
Plaza Taupe



PANTONE 15-3620
Lavendula



PANTONE 15-0332
Leaf Green



PANTONE 15-3930
Vista Blue



PANTONE 18-3833
Dusted Peri

Badgley Mischka *"It's what colors looked like in 1950s movies – clear, yet faded and soft. It's romantic and feminine."*

Max Azria for BCBG *"I chose child-like colors that are sweet and charming in playful, surprising combinations."*

Michael Vollbracht for Bill Blass *"For spring I combined the muted pinks and greens of English garden roses with warm, earthy hues."*

Jeff Mahshie for Chaiken *"This season, I layered multiple colors for an energetic feeling – pinks, greens, blues and purples – along with tonal and ombre combinations."*

Oscar de la Renta *"The prominent colors of my spring collection are Rosebloom, Raspberry Rose, Green Flash and Capri."*

Douglas Hannant *"I was inspired by a barefoot walk through the garden. My colors this season are carefree, optimistic and romantic."*

Carolina Herrera *"Our colors exude the aura of elegance and vitality synonymous with carefree days on the French Riviera in the 1930s."*

Betsey Johnson *"Spring is about sexiness – raunchy, racy, passionate, luscious. Anything goes!"*

Anne Klein *"I chose all the shades of the sun and combined them with earthy neutrals."*

Michael Kors *"My collection captures the glamorous resort spirit of Capri with bold colors."*

Nanette Lepore *"I kept colors bright, clean and fresh. I wanted the collection to burst with color!"*

Carmen Marc Valvo *"With cool pinks and blues inspired by my garden, this season's colors convey a feeling of youth and vitality."*

Nicole Miller *"I used very pale and faded colors inspired by Victorian lingerie – very feminine and soft."*

Tracy Reese *"My colors for spring convey emotional impact, fierce desire and passion."*

Alice Roi *"I was inspired by Georgia O'Keefe and the colors of the desert from morning to noon to night – intense and saturated colors against cool evening colors."*

Behnaz Sarafpour *"This season is about graphic combinations of colors and finishes."*

Peter Som *"It's all about sexy color that seduces rather than screams – a cool optimism and uncontrived prettiness."*

Anna Sui *"It is about clarity, freshness, coolness – fun-in-the-sun sports, surfing and the beach."*

Ellen Tracy *"Spring is a season inspired by the tremendous range of flora and fauna. Nature gives us a profusion of color combinations to choose from."*

Yeohlee *"My colors this season evoke the serenity and fierceness of the environment – the greens of spring and summer, the colors of the woods."*

Alvin Valley *"This season, I chose understated neutrals and muted tones drawn from nature."*

designer*talk* aboutspring04

Ralph Lauren



Carolina Herrera

"Our colors exude the aura of elegance and vitality synonymous with carefree days on the French Riviera in the 1930s."

PROMINENT COLORS

Touches of Terracotta and Tea Rose mixed with Ivory and Black. Delicate Apricot accented by rich Terracotta

INSPIRATION

The photographs of Lartigue, the vibrancy of the lifestyle on the French Riviera during the 1930s, and the intense colors in the paintings of Zuberan

SIGNATURE COLORS

Terracotta, Tea Rose and Bitter Lemon

COLOR PHILOSOPHY

We revitalized the classic combination of Black and White by adding touches of intense and rich fruit colors – Apricot, Bitter Lemon, Guava

Carolina Herrera



PANTONE 14-1907
Peachskin



PANTONE 18-1651
Cayenne

Badgley Mischka

"It's what colors looked like in 1950s movies – clear, yet faded and soft. It's romantic and feminine."

PROMINENT COLORS

**White and Pale Pink; Sapphire Blue and Silver;
White and Cream**

INSPIRATION

**What colors looked like in 1950s movies –
clear yet faded and soft**

SIGNATURE COLOR

White

COLOR PHILOSOPHY

**Fresh White with clear shots of color that
is soft, feminine and girly**

Badgley Mischka



PANTONE 14-1907
Peachskin

Nicole Miller

"I used very pale and faded colors inspired by Victorian lingerie – very feminine and soft."

PROMINENT COLORS

**White, Ivory, Mauve and Celadon –
very pale and faded colors**

INSPIRATION

Victorian lingerie

SIGNATURE COLOR

Ivory

COLOR PHILOSOPHY

**Very muted colors that look vintage –
very feminine and soft**

Carmen Marc Valvo

"With cool pinks and blues inspired by my garden, this season's colors convey a feeling of youth and vitality."

PROMINENT COLORS

**Cool blues to cool pinks – the colors of a cool
spring perennial garden**

INSPIRATION

The colors of my garden

SIGNATURE COLOR

**Any shade of Pink, whether it be Peony Pink
or Fuchsia**

COLOR PHILOSOPHY

**Color continues to play an important
role in fashion**



Nicole Miller



Carmen Marc Valvo



PANTONE 14-1907
Peachskin

Michael Kors

"My collection captures the glamorous resort spirit of Capri with bold colors."

PROMINENT COLORS

Bold citrus colors and Mediterranean blues paired with loads of White with Khaki, Luggage and Gold accents

INSPIRATION

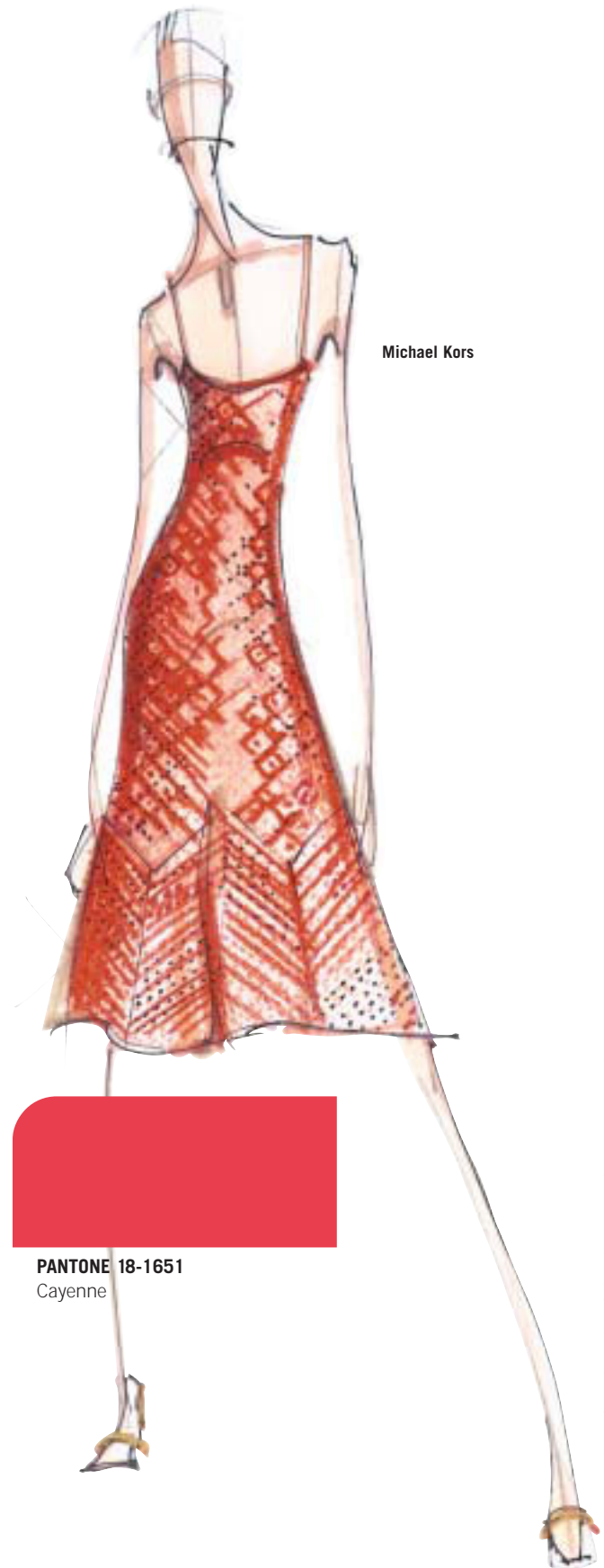
The glamorous resort spirit of Capri

SIGNATURE COLOR

Sharp Tangerine Orange

COLOR PHILOSOPHY

Bold and graphic



Michael Kors

PANTONE 18-1651
Cayenne

Douglas Hannant

"I was inspired by a barefoot walk through the garden. My colors this season are carefree, optimistic and romantic."

PROMINENT COLORS

Poppy, Periwinkle, Marigold, Leaf Green

INSPIRATION

A barefoot walk through the garden – carefree, optimistic and romantic

SIGNATURE COLOR

Poppy

COLOR PHILOSOPHY

Uplifting color

Douglas Hannant



PANTONE 18-1651
Cayenne

Peter Som

"It's all about sexy color that seduces rather than screams – a cool optimism and uncontrived prettiness."

PROMINENT COLORS

Cool Wedgwood Blue with Lingerie Pink; shots of Butter Yellow and cool Crocus Green; Silver, Black and Optic White

INSPIRATION

David Bailey photographs of Jean Shrimton and Marisa Berenson. I wanted to capture the cool optimism and uncontrived prettiness of those images

SIGNATURE COLORS

Wedgwood Blue and Optic White

COLOR PHILOSOPHY

Spring 2004 is about color in a new way – true hues that are less saturated and a bit more subtle and slick. Ice cream shades



Peter Som



PANTONE 15-1054
Cadmium Yellow

Alice Roi

"I was inspired by Georgia O'Keefe and the colors of the desert from morning to noon to night – intense and saturated colors against cool evening colors."

PROMINENT COLORS

Very warm Burnt Orange; cool Light Lilac; Black, Moss; bright Canary Yellow and Light Blue

INSPIRATION

Georgia O'Keefe: The Blue and Yellow of the desert in the morning light, the Burnt Orange and Peach of the desert at noon, and the cool Lilac, Black and Navy of the desert at night

SIGNATURE COLOR

Burnt Orange

COLOR PHILOSOPHY

I want the intense, saturated Grand Canyon clay colors to pop against the cool evening's Violet, Black and Navy

Anne Klein

"For Spring 2004, I chose all the shades of the sun and combined them with earthy neutrals."

PROMINENT COLORS

Soft Cream to Golden Yellow to Bronze combined with earthy neutrals and a paradox of a modern "synthetic" yellow

INSPIRATION

The sun-drenched and bronzed photographs of H. Lartigue

SIGNATURE COLOR

All shades of the sun

COLOR PHILOSOPHY

Warmth and brightness

Alice Roi



Anne Klein



PANTONE 15-1054
Cadmium Yellow

Jeff Mahshie for Chaiken

"This season, I layered multiple colors for an energetic feeling – pinks, greens, blues and purples – along with tonal and omber combinations."

PROMINENT COLORS

Lavender Blue, Purple Mountain, Blithe, Aquamarine, Herbal Green, Calla Green, Prism Pink, Azalea Pink, Fandango Pink, Camellia, Vibrant Yellow, Stone Grey, Sepia, Black Ink, White in tonal and omber combinations

INSPIRATION

Designer Giorgio di Sant'Angelo

SIGNATURE COLOR

All

COLOR PHILOSOPHY

Layering of multiple colors

Anna Sui

"It is about clarity, freshness, coolness – fun-in-the-sun sports, surfing and the beach."

PROMINENT COLORS

Ice cream and sherbet colors: Pistachio, Mint, Blueberry, Lemon, Tangerine, Lime, Cherry. Lots of White and Black combos

INSPIRATION

Fun-in-the-sun sports, surfing, beach

SIGNATURE COLOR

Lavender

COLOR PHILOSOPHY

Clarity, freshness, coolness

Jeff Mahshie



Anna Sui



PANTONE 15-3620
Lavendula



PANTONE 16-1105
Plaza Taupe

Michael Vollbracht for Bill Blass

"For spring, I combined the muted pinks and greens of English garden roses with warm, earthy hues."

PROMINENT COLORS

Warm, earthy hues that range from Taupe, Gray and Mother of Pearl to Oyster, Sage, Muted Pinks and Sand

INSPIRATION

English garden roses

SIGNATURE COLOR

Muted greens – Sage Green

COLOR PHILOSOPHY

Pretty shades of garden flowers

Bill Blass



PANTONE 17-2033
Fandango Pink

PANTONE 15-0332
Leaf Green

Nanette Lepore

"I kept colors bright, clean and fresh. I wanted the collection to burst with color!"

PROMINENT COLORS

Apple Green, Bright Pink, and Lemon Yellow mixed with White and Khaki

INSPIRATION

Preppy dressing with an ethnic twist. The clothing is bright and confident.

SIGNATURE COLORS

Apple Green and Bright Pink

COLOR PHILOSOPHY

Colors achieve a modern, clean look but still allow the clothing to maintain its femininity. The sharp colors complement the well-pressed look of the clothing

Yeohlee

"My colors this season evoke the serenity and fierceness of the environment – the greens of spring and summer, the colors of the woods."

PROMINENT COLORS

White, Spring Green, Later Summer Green, woody shades of Brown and Black

INSPIRATION

The environment

SIGNATURE COLOR

Green

COLOR PHILOSOPHY

Anything goes



PANTONE 17-2033
Fandango Pink



PANTONE 15-0332
Leaf Green

Ellen Tracy

"Spring is inspired by the tremendous range of flora and fauna. Nature gives us a profusion of color combinations to choose from."

PROMINENT COLORS

Hot, colorful florals grounded by sophisticated greens; splashy Tigerlily and Sunflower combined with sophisticated Olive and Avocado; mellow Sage and Thyme splashed with Poppy

INSPIRATION

The tremendous range of flora and fauna found throughout the natural world

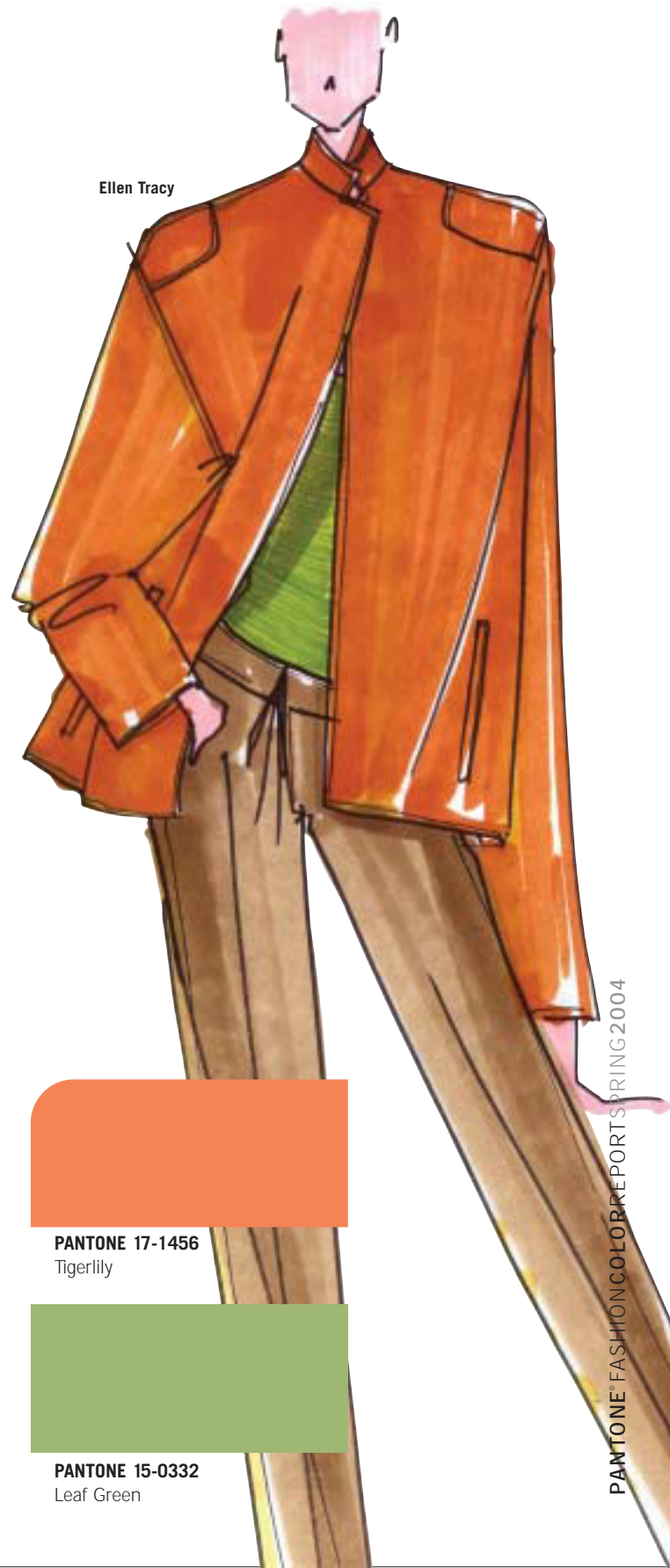
SIGNATURE COLOR

The range of greens

COLOR PHILOSOPHY

Spring is all about color. Flora and fauna give us a profusion of color combination choices

Ellen Tracy



PANTONE 17-1456
Tigerlily



PANTONE 15-0332
Leaf Green

Alvin Valley

"This season, I chose understated neutrals and muted tones drawn from nature."

PROMINENT COLORS

Pale Gold, Silver, Silver Cloud, Birch, Oxford Tan, Bleached Sand, Nougat, Chalk Blue, Rose Smoke, Scallop Shell, Creole Pink, Deauville Mauve, Ash, Angel Blue, Estate Blue

Peter Som

"It's all about sexy color that seduces rather than screams – a cool optimism and uncontrived prettiness."

PROMINENT COLORS

Cool Wedgwood Blue with Lingerie Pink; shots of Butter Yellow and cool Crocus Green; Silver, Black and Optic White

INSPIRATION

David Bailey photographs of Jean Shrimton and Marisa Berenson. I wanted to capture the cool optimism and uncontrived prettiness of those images

SIGNATURE COLORS

Wedgwood Blue and Optic White

COLOR PHILOSOPHY

Spring 2004 is about color in a new way – true hues that are less saturated and a bit more subtle and slick. Ice cream shades

Alvin Valley



Peter Som



PANTONE 15-3930
Vista Blue



PANTONE 16-1105
Plaza Taupe

Tracy Reese

"My colors for spring convey emotional impact, fierce desire and passion."

PROMINENT COLORS

Colors are warm – Lemon Yellow, Hot Tomato, Shocking Pink, Pool Blue, Sunlight, Tranquil Sea, Juicy Orange, Grass Green, Antique White.

INSPIRATION

Fine art and historical references

SIGNATURE COLOR

Sour Lemon

COLOR PHILOSOPHY

Keep it bright and mix it up. Be noticed



what's HOT BY *who's* HOT

color and the home

by THOM FILICIA, Star of Bravo's *Queer Eye for the Straight Guy*

What do you see as the color trends for Spring 04?

Color is going to get even more vibrant than it was this year. With everything that's going on politically and socially in the world – which is scary and kind of exciting in certain ways – people are responding to very powerful, saturated colors.

Spring 04 is about the colors found in a really great '70s chintz – fresh fresh fresh Lime, Chocolate Brown, Ice Blue, Vibrant Yellow. Coral is starting to be understood again. Crisp, acidic colors are back in everyone's vocabulary. It's almost a preppy color palette. We've seen it in fashion. People are remembering that they liked it and have reunited with it, and now they're going to be more daring and have more fun with it. I hate boring; I'm all about fun.

Color TIP

Paint all your furniture Chinese Red. Nothing could be more chic.

color and diamonds

by SALLY MORRISON

Director of the Diamond Information Bureau

Colored diamonds in Spring 04

Diamonds in earthy, subtle hues are experiencing a renaissance. People are discovering that they can enjoy the colored-diamond look more affordably with colors like Cognac and Champagne than with some of the more vivid ones.

Do colored diamonds correspond with moods?

Certainly any diamond is bound to lift the spirits! A brilliant colorless diamond imparts a sense of purity and impenetrability, whereas a Pink diamond accent adds a jolt of frivolity.

Celebrities and colored diamonds

While Jennifer Lopez helped ignite public interest in colored diamonds with her Pink diamond engagement ring, a number of celebrities have been quietly adding colored diamonds to their personal collections. Halle Berry wore her own Cognac diamond studs to the Oscars in March, and Oprah Winfrey (who knows her diamonds) is often spotted wearing exquisite Canary diamond earrings.

color and cosmetics

by OLIVIA CHANTECAILLE

Creative Director of Chantecaille Beauté

Color Trend

Spring 2004 is about fresh, brilliant jewel tones – clean Aquamarines and sun-drenched Corals with cool Turquoise.

Inspiration

Olivia's color choices are inspired by the evolution of fashion and culture – the people, art, architecture and tastes she finds in the cities she inhabits and visits.

EYE SHADOWS:



PANTONE
17-3922
Blue Ice



PANTONE
18-3211
Grapeade

LIPSTICKS:



PANTONE
18-1807
Twilight Mauve



PANTONE
17-1608
Heather Rose



PANTONE
16-1806
Woodrose



PANTONE
17-1512
Nostalgia Rose

FOUNDATION:



PANTONE
16-1511
Rose Tan



PANTONE
16-1516
Cameo Brown



PANTONE
15-3802
Cloud Gray

color and hair

by RITA HAZAN

Colorist, ADIR Salon

Color Trend

Spring 2004 will see lighter, beachy, baby-blond highlights; golden blonde with pale gold highlights; and warm tones with a stronger, bolder, thicker highlight.

Inspiration

Forties movie siren meets rock star.

Styles

Big and sexy with long bangs; big, curly hair; and sexy layers.

TIP

Less is more.



BASE: PANTONE 17-1045 Apple Cinnamon
HIGHLIGHTS: PANTONE 13-0822 Sunlight



BASE: PANTONE 19-1020 Dark Earth
HIGHLIGHTS: PANTONE 16-1139 Amber Gold



BASE: PANTONE 18-1321 Brownie
HIGHLIGHTS: PANTONE 13-1012 Frosted Almond

designers' emotional messages for *spring* color

Warmth

with beauty.

Freedom, energy and EXCITEMENT.

Love.

Romance.

Celebration, fame

and valour.

J-O-Y.

Happiness.

s e r e n i t y .

A softness, an innocence,

a sense of optimism.

Cheerfulness and youthfulness.

Femininity and charm.

Upbeat, feel-good.

Elegance and VITALITY.

S e x y .

FIERCE DESIRE,

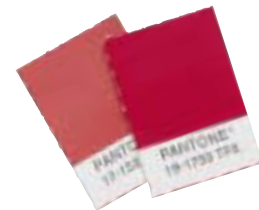
passion.



Pantone - the fashion industry's leading color resource

The company that created a global color language offers the latest colors and trends to use in designing and producing your color ideas across all materials.

With PANTONE, you ensure the best results.



**Whether fashion or home,
we've got your number**

*throw away all
color rules*

have fun with color

**designers provide
color** **TIPS** for *spring* 04

*use color to elevate
your mood*

*mix brights
with naturals*

don't be afraid of green

TIP *Badgley Mischka* - **Nude shoes go with everything for spring!** **TIP** *Max Azaria for BCBG* - **It is not necessary to coordinate colors.** **TIP** *Michael Vollbracht for Bill Blass* - **Buy black first, then be gregarious with all shades of pink and green.** **TIP** *Liz Collins* - **Don't be afraid of color – mix up brights with naturals. Throw away all color rules – everything works on any skin type!** **TIP** *Douglas Hannant* - **Wear colors that lift the spirits – yours and everyone around you.** **TIP** *Heatherette* - **Go with what makes you the most confident!** **TIP** *Carolina Herrera* - **Add a splash of intense color to liven up a monochromatic color scheme.** **TIP** *Betsy Johnson* - **Everything goes!** **TIP** *Anne Klein* - **Be confident and strong in your choices.** **TIP** *Michael Kors* - **Pair color with white.** **TIP** *Nanette Lepore* - **Have fun with color – don't be afraid to mix it up!** **TIP** *Carmen Marc Valvo* - **If you are still afraid of “color” (or just not accustomed to it), team it against ever-classic black or white.** **TIP** *Nicole Miller* - **Wear colors that suit you – do not feel you have to follow a trend.** **TIP** *Tracy Reese* - **Keep it bright and mix it up. Be noticed!** **TIP** *Alice Roi* - **Don't be scared of mixing beautiful bright colors.** **TIP** *Peter Som* - **Have fun with color!** **TIP** *Anna Sui* - **Don't be afraid of green.** **TIP** *Ellen Tracy* - **Add a hot color to natural greens for a modern look this spring.** **TIP** *Yeohlee* - **Use color to elevate your mood.**



PANTONE 17-1456
Tigerlily



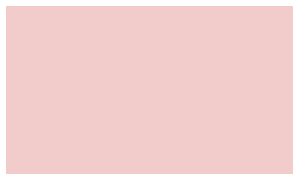
PANTONE 18-1651
Cayenne



PANTONE 17-2033
Fandango Pink



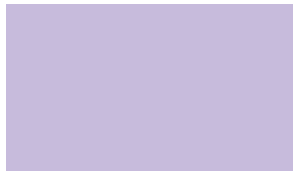
PANTONE 15-1054
Cadmium Yellow



PANTONE 14-1907
Peachskin



PANTONE 16-1105
Plaza Taupe



PANTONE 15-3620
Lavendula



PANTONE 15-0332
Leaf Green



PANTONE 15-3930
Vista Blue



PANTONE 18-3833
Dusted Peri

PANTONE Fashion Color Report Vol. 20, September 2003. Pantone, Inc., 590 Commerce Blvd., Carlstadt, NJ 07072-3098. Tel: 201.935.5500 Fax: 201.896.0242 PANTONE Colors displayed here may not match PANTONE-identified standards. Consult current PANTONE Textile Color System® Publications for accurate color. PANTONE® and other Pantone, Inc. trademarks are the property of Pantone, Inc. © Pantone, Inc., 2003. All rights reserved.

for more
information
go to



PERRY COLOR
CARD

685 Terrace Drive
San Dimas, CA 91773
Ph (909) 599-7954
Fx (909) 592-9976
www.perrycolorcard.com
pantone@perrycolorcard.com