



PANTONE®

Fashion
Color Report
Spring 2005

i dolce colori *color, mediterranean style*

New York Fashion Week Spring 2005, September 8-15, 2004

They are the New Bohemians: Jet-set artists in search of inspiration – and pleasure. Passionate, hedonistic. Racing across the ocean to capture a lifestyle that is at once foreign and familiar, casual and luxurious.

On the Mediterranean, they surf Blue Turquoise waters reflecting the infinite, cloudless sky. Diving from stony cliffs of Slate Gray and Kelp into the Delft depths, they rise to the surface with Coral Reef treasures. On shore, sarongs are so right among the Vibrant Green foliage blooming in lush mosaics. The sun-saturated days slide effortlessly into long nights on the Via Veneto, until finally the horizon breaks with brilliant streamers of Aurora and Flame, Begonia Pink and Sweet Lavender, heralding yet another glorious, carefree day. At last, they return to their ateliers with sketchbooks filled with the shades of sand, sea and shells.

Those who cannot find their sea legs eschew Italy's sparkling shores for the American West, falling under the seductive spells of the desert and prairie. There, they hear tales of a fabled past and rediscover the authenticity of Native American cultures. Others venture into the lush, tropical rainforest, abundant with exotic life – the colors, shapes, sounds and scents of the native flora and fauna, unique in all the world.

“Color for Spring 05 is wildly divergent. The mix is dramatic – like throwing confetti and seeing where it lands,” observes Leatrice Eiseman, executive director, Pantone Color Institute®. “You could make combinations of any of these colors – the rulebook has been thrown out the window. Meanwhile, Pink, still fresh and relevant, has been adopted as New York’s new signature color.”

For over 10 years, Pantone, Inc. has surveyed the designers of New York Fashion Week to bring you the season's most important color trends. This sketchbook previews color for Spring 2005.



PANTONE 12-0642
Aurora



PANTONE 16-6339
Vibrant Green



PANTONE 17-1462
Flame



PANTONE 15-1331
Coral Reef



PANTONE 17-1022
Kelp



PANTONE 19-4039
Delft



PANTONE 15-2215
Begonia Pink



PANTONE 16-3931
Sweet Lavender



PANTONE 15-5217
Blue Turquoise



PANTONE 16-5804
Slate Gray



Douglas Hannant

PROMINENT COLORS

Desert Rose, Amber, Turquoise, Red Clay, Cactus Flower, Coral

INSPIRATION

The color palette is derived from the Southwest landscape – from a bleached, midday crispness to a rich, elegant sunset.

SIGNATURE COLOR

Desert Rose, Turquoise, Coral, Lavender and Amber

COLOR PHILOSOPHY

Color for spring is luminescent. It glows with a rich iridescence.

on the cover



**Michael Vollbracht
for Bill Blass**

PROMINENT COLORS

Pink, Toast

INSPIRATION

Paris

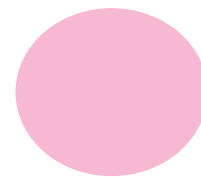
SIGNATURE COLOR

Murky Pink

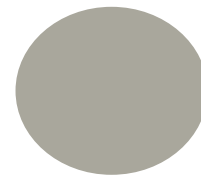
COLOR PHILOSOPHY

With the use of chiffon, colors are abundant.

Douglas Hannant



PANTONE 15-2215
Begonia Pink



PANTONE 16-5804
Slate Gray



Michael Kors

PROMINENT COLORS

Cool shades of Blue paired with crisp, clean Whites; vivid Greens paired with earthy tones of Stone and Brown

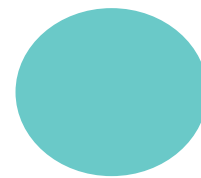
INSPIRATION

Shades of Blue evoke the magnificent hues of the Mediterranean

SIGNATURE COLOR

Turquoise

Michael Kors



PANTONE 15-5217
Blue Turquoise





Narciso Rodriguez

PROMINENT COLORS

Aqua Blue with highlights of Turquoise and White; Pool Blue and Ice Blue combined with White, Pale Citrine and Lava Gray; Process Blue is always a favorite; and some Pinks

INSPIRATION

Beach life, sports, the ocean, Rio and surfing

SIGNATURE COLOR

Shades of Blue:

Aqua Blue, Pool Blue, Ice and Process Blue

COLOR PHILOSOPHY

Different Blues coming together to create contrast and harmony



Peter Som

PROMINENT COLORS

Washed and cool shades of Greens with Blue undertones – Celadon, Jade and Pale Aqua mixed with earthy, sophisticated neutrals like Burlap, Khaki and Buttermilk. Shots of Pale Raspberry Pink and Aged Gold Filigree punctuate the collection.

INSPIRATION

Richard Diebenkorn paintings, colors of Northern California beaches – anything reflecting that relaxed, carefree culture

SIGNATURE COLOR

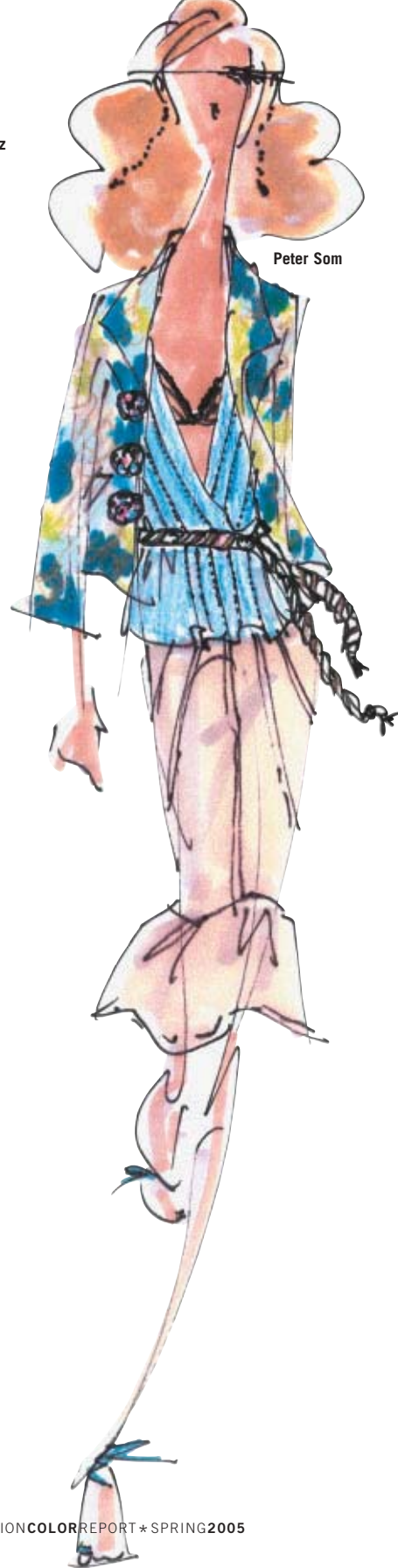
Washed Jade Green

COLOR PHILOSOPHY

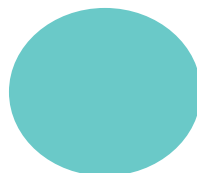
Spring 2005 is all about pale, washed shades of colors that are calming, relaxed and tonal.



Narciso Rodriguez

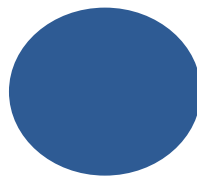


Peter Som



PANTONE 15-5217

Blue Turquoise



PANTONE 19-4039

Delft



Alvin Valley

PROMINENT COLORS

From breathtaking earth tones such as Golden Sand Browns and luminous Taupes to intense Royal Blues and passionate Reds of the Costa Brava region

INSPIRATION

The New Bohemian jet-set lifestyle of Dalí and Gala, their summers spent on the Costa Brava coast, Gaudi architecture in the Catalan region, and the Surrealist work of Miró

SIGNATURE COLOR

Mosaics of color – earth tones such as Dusk Browns, Marble Taupes and Stone Beiges, as well as more vibrant colors like Royal Blues and Blood Orange Reds

COLOR PHILOSOPHY

Juxtaposing a vast mosaic of colors against neutrals such as Beige, Taupe and Tan



Carolina Herrera

PROMINENT COLORS

Chestnut with Whisper White, Jelly Bean, Glazed Ginger, Spicy Orange, Aruba Blue

INSPIRATION

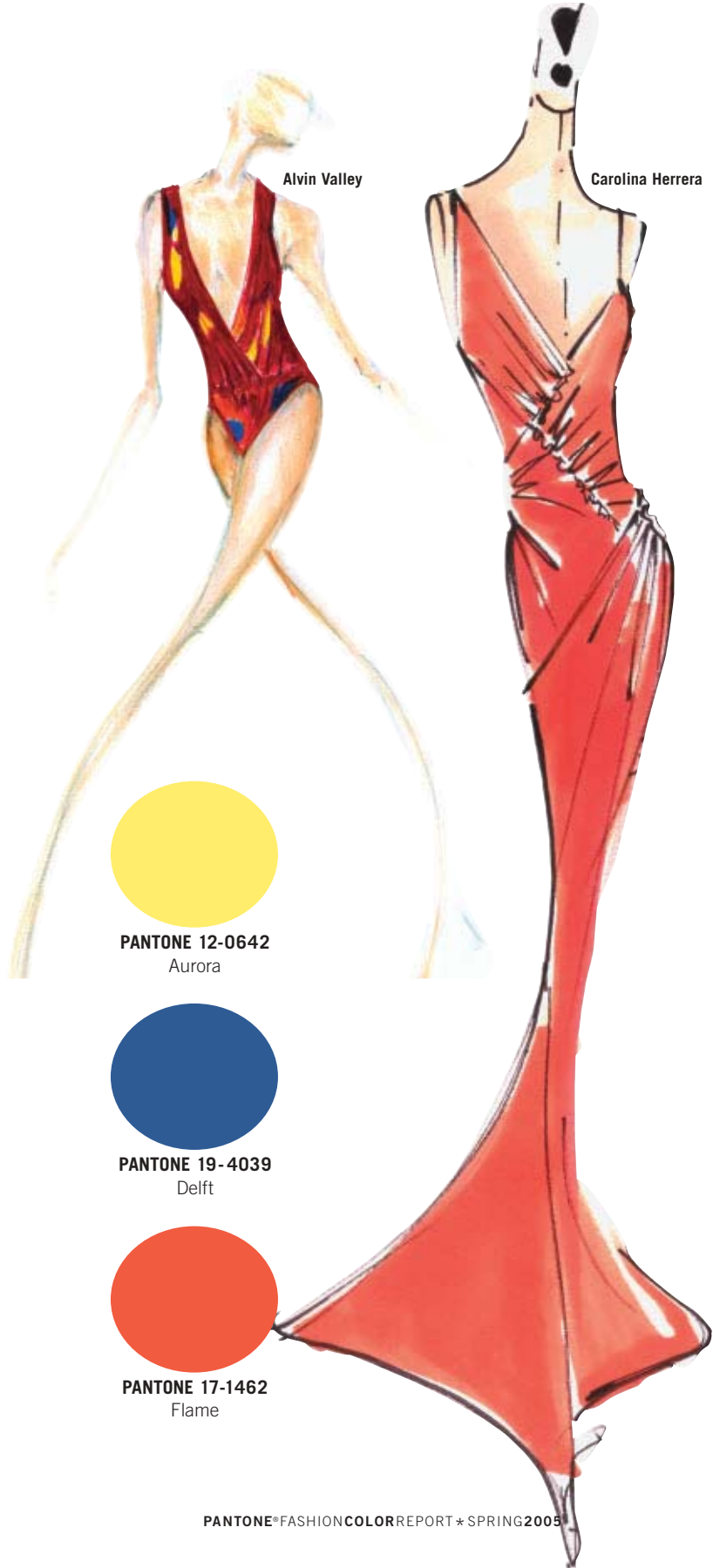
Interior designers from the '40s

SIGNATURE COLOR

Spicy Orange

COLOR PHILOSOPHY

Mixing colors that normally would not be mixed





David Rodríguez

PROMINENT COLORS

Rich yet subtle shades inspired by the Amalfi Coast – Browns and Beige against stark Capri White. For daytime, a cool shade of Melon paired with Positano Green provides a light, fresh breeze of color.

And for after five, cocktail and evening, it's all about a strong contrast: Maserati Black provides a rich background for Hot Bougainvillea Pink.

INSPIRATION

The colors of Fellini's *La Dolce Vita* – if it had been shot in color! I just love that whole idea of the jet set glitterati.

SIGNATURE COLOR

Hot Bougainvillea Pink

COLOR PHILOSOPHY

Color is the fastest and most primal way to evoke an emotion. I gravitate toward colors that have a soothing effect, or colors that have such a vibrancy you can't help but feel good.



Cynthia Rowley

PROMINENT COLORS

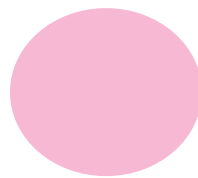
Bright Pink, Green, Yellow, shades of Natural

INSPIRATION

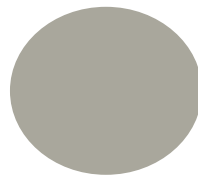
1930s, 1940s, 1950s world travel – “The Grand Tour” – Morocco, India

SIGNATURE COLOR

Natural tones with bright citrus colors



PANTONE 15-2215
Begonia Pink



PANTONE 16-5804
Slate Gray



David Rodríguez



Cynthia Rowley



Nicole Miller

PROMINENT COLORS

Aqua and Nude; Apricot;
Yellow and Quartz

INSPIRATION

Celtic documents from
The Book of Kells

SIGNATURE COLOR

Peachy Nude

COLOR PHILOSOPHY

Bright and cheerful
but not loud

Ellen Tracy

PROMINENT COLORS

Spring is grounded by
neutral Flax and White.
Crystalline washes in Pink,
Lavender and Quiet Green
color textured fabrics in
solids and prints, with
warm metallics shot
through the collection.

COLOR PHILOSOPHY

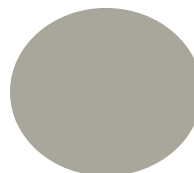
Romantic fabrics in very
feminine pastel washes
mixed with clean, tailored
looks in Neutral



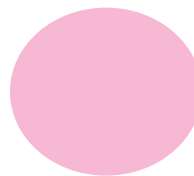
Nicole Miller



Ellen Tracy



PANTONE 16-5804
Slate Gray



PANTONE 15-2215
Begonia Pink



Benjamin Cho

PROMINENT COLORS

Black and White; primary colors; a touch of pastels

INSPIRATION

A need for boldness

SIGNATURE COLOR

Black

COLOR PHILOSOPHY

Combine bold, vivid colors into a predominantly Black and White foundation

Gustavo Arango

INSPIRATION

Passionate about architecture, I was inspired by John Utzon's design of the Sydney Opera House, where shape, form and style become one.

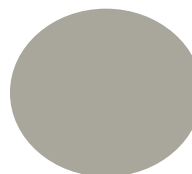
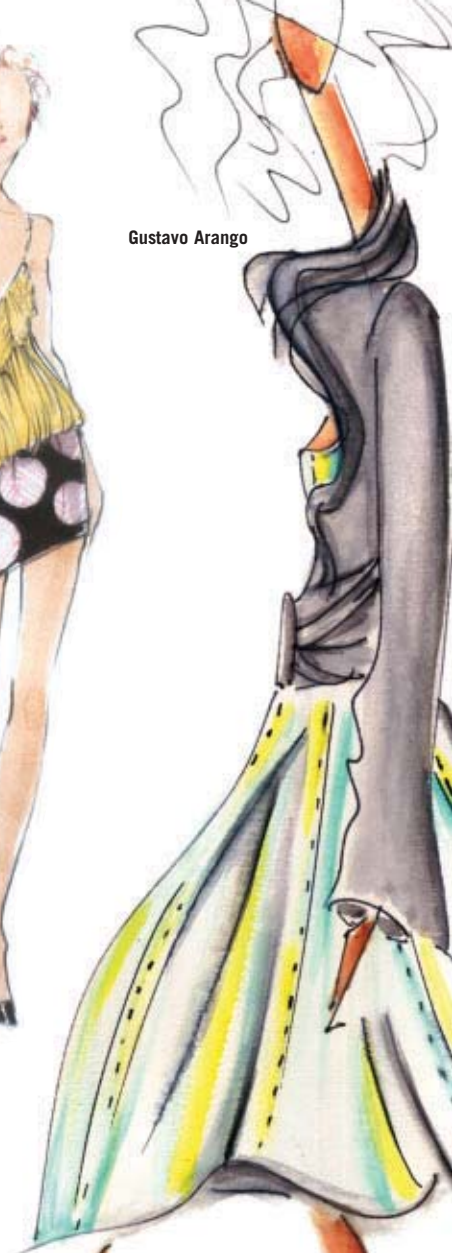
COLOR PHILOSOPHY

This season I keep color bright, clean and fresh.

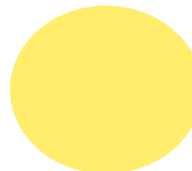
Benjamin Cho



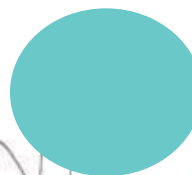
Gustavo Arango



PANTONE 16-5804
Slate Gray



PANTONE 12-0642
Aurora



PANTONE 15-5217
Blue Turquoise

Shelly Steffee

PROMINENT COLORS

Warm Cinnamons, lush Pomegranate, pale Nudes and Cameos, bases of Dove and deep Honey with accents of Thistle and Indigo Blue

INSPIRATION

The portraits of Fernand Khnopff. His use of color in his portraits seem like gentle washes that frame the faces of the subjects.

SIGNATURE COLOR

Flesh/Cameo

COLOR PHILOSOPHY

Subtle changes of color with accents of depth



Tracy Reese

PROMINENT COLORS

Neutral palettes elevated by breathless pastels and fresh brights – Peach Kiss, Copper, Passion Fruit and White Cloud; Sea Green, Spruce and Pine mixed with Iris and Berry Stain; mineral tones of Azure Blue, Golden and Rose Quartz

INSPIRATION

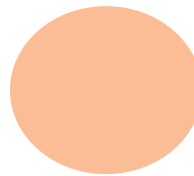
Our natural world, with colors drawn from earth, sea and sky

SIGNATURE COLOR

All shades of Green, from the palest Turquoise to the darkest Evergreen

COLOR PHILOSOPHY

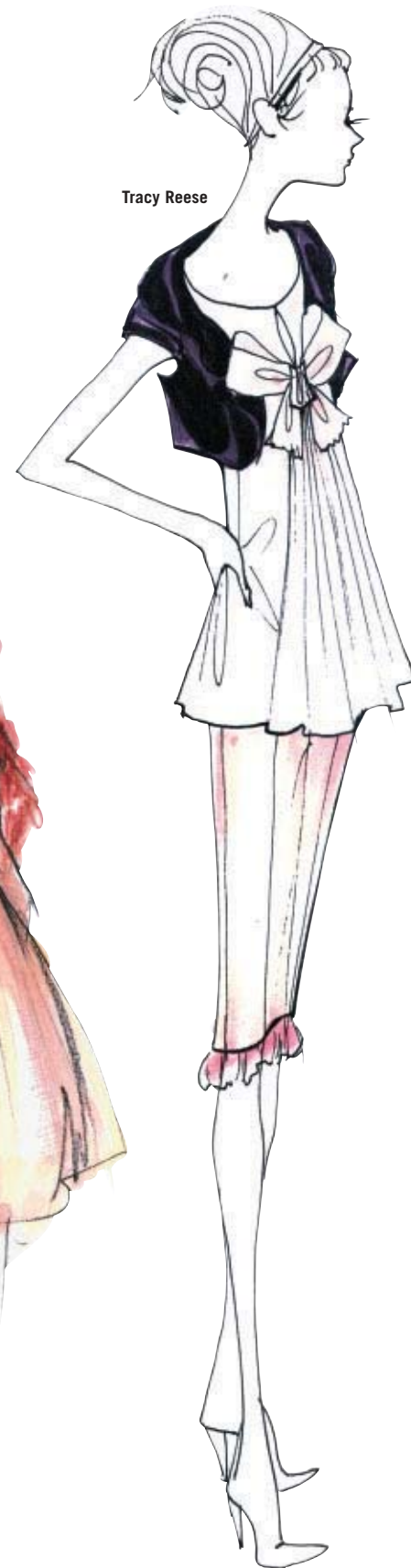
To create gorgeous palettes with colors that reflect our natural world



PANTONE 15-1331

Coral Reef

Tracy Reese



Shelly Steffee





Anna Sui

PROMINENT COLORS

Linen, Sand, Parchment,
Buckskin, Tea-Dipped Flax,
Painted Desert, Sunburn,
Sage Bush, Blue Bell,
Wild Lavender, Prairie Rose,
Indigo, Bandana Red,
Yellow Rose of Texas

INSPIRATION

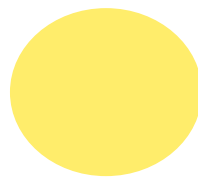
Early 20th century
Sepia-tone portraits of
Native Americans by
photographer Edward
S. Curtis

SIGNATURE COLOR

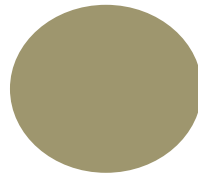
Chamois

COLOR PHILOSOPHY

Antiqued, weathered



PANTONE 12-0642
Aurora



PANTONE 17-1022
Kelp





Nanette Lepore

PROMINENT COLORS

A combination of vivid brights set against more muted tones, incorporating everything from Deep Violet and Acid Green to softer shades like Pale Lilac and Dove Pink, with a touch of Cobalt

INSPIRATION

The vivid patterns and romantic shapes of the Bohemian lifestyle inspired me to use the combination of soft and strong, bold colors played off of soft hues.

SIGNATURE COLOR

Multiple hues of Violet

COLOR PHILOSOPHY

The opalescent luster of every design will give people a new way to wear color – soft but vibrant.



Sandi Davidson for Lilly Pulitzer

PROMINENT COLORS

Our concept for Spring 2005 is “A Sea of Color,” and includes Hot Pink, Coral, Bright Green, Orange, Lemon Yellow and Azure. Bright and soft Pinks, Greens, and Turquoise Blues are very strong. What looks new and exciting is the use of citrus colors – Yellow, Orange and Coral ... and Black.

INSPIRATION

Our heritage and our roots inspired us. Not just Palm Beach but the roots of Palm Beach itself: the Mediterranean. For Spring 2005, we looked to the Mediterranean Sea, inspired by the colors of the Cote d’Azur in places such as Nice, Cap Ferrat and the Cap d’Antibes.

SIGNATURE COLOR

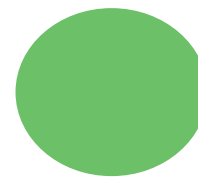
Our signature color is, as always, Pink.

COLOR PHILOSOPHY

Color can be uplifting, can instill joy and inspire happiness. Wear color – be happy!



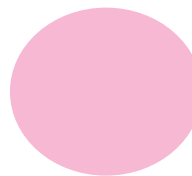
Nanette Lepore



PANTONE 16-6339
Vibrant Green



Lilly Pulitzer



PANTONE 15-2215
Begonia Pink



Alice Roi

PROMINENT COLORS

Navy, Gray, Crème, Black, Watercolor Pale Blue, Watercolor Pale Mint; classic colors alongside the iciest Mints and Blue

INSPIRATION

New York architecture – Grays, Navys, Crèmes, Blacks capped with Pale Blue Sky

SIGNATURE COLOR

A very beautiful, very pale Blue

COLOR PHILOSOPHY

Classic colors mixed with a watercolor palette



Fusha by Marie Claudinette Jean

PROMINENT COLORS

Romantic, soft colors like Lavendula, Spearmint, Passion, Mauve and Rust

INSPIRATION

The romantic mood and feel of Paris

SIGNATURE COLOR

Mauve and Peach

COLOR PHILOSOPHY

Based on romance, the collection is diverse and embodies the beauty of women of all shades of color.



Fusha

PANTONE 15-5217
Blue Turquoise

Alice Roi

PANTONE 16-3931
Sweet Lavender



**Baby Phat by
Kimora Lee Simmons**

PROMINENT COLORS

Muted earth tones – Burnt Umber, Mauve, Green, Sage and Taupes – mixed with fascinating Sky Blues; think stoneware meets oasis

INSPIRATION

When envisioning the tropics, I thought of exotic birds and Crisp Green foliage played against colorful sunsets. Also sand, different tree barks, and flowering plants. I wanted to share these things and inspire people to get out and see the world.

SIGNATURE COLOR

Light Sky Blue, Sage and Gold

COLOR PHILOSOPHY

By layering bright-colored varying stripes against organic patterns, the clothing is given more depth. These clothes depict traveled landscapes with vast bodies of water and infinite sky.



Derek Lam

PROMINENT COLORS

Combinations of soft, powdery pastels of Lemongrass Yellow, Muslin and Nude with the rustic, Asian-influenced colors of Cinnabar Red, Orchid Purple and Sumatra Brown

INSPIRATION

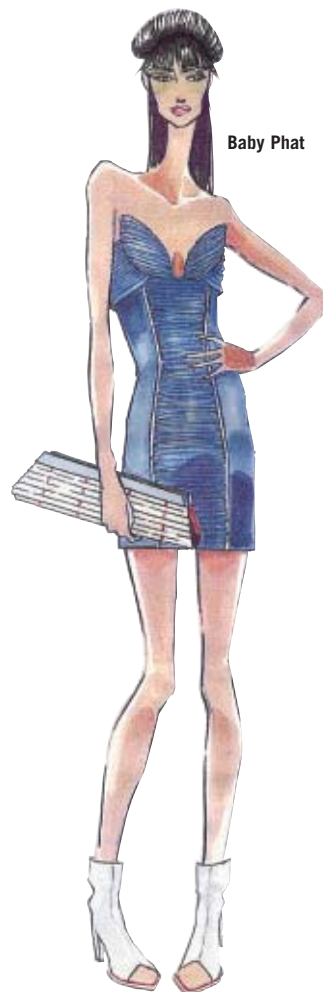
The colors are inspired from Helmut Newton's autobiography, specifically the chapter about his time in Singapore before WWII, and his lover, Josette.

SIGNATURE COLOR

Cinnabar Red and Sumatra Brown

COLOR PHILOSOPHY

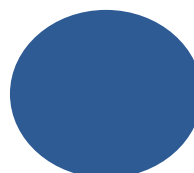
Combining soft and refined feminine skin tones with very earthy and warm colors



Baby Phat



Derek Lam



PANTONE 19-4039

Delft



Ghost by Tanya Sarne

PROMINENT COLORS

All colors are warm, vintage and fresh: Lemon Yellow, Kingfisher Blue, Melon Peach, Shamrock Green, Watermelon Pink, Khaki Brown, Misty Blue, Pale Aquamarine and Antique Beige.

SIGNATURE COLOR

Lemon Yellow mixed with Antique Beige and bright combinations

COLOR PHILOSOPHY

Mellow brightness and harmonious mixes



Yeohlee

PROMINENT COLORS

White, Blue, Brown, Green and Yellow

INSPIRATION

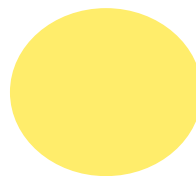
Transitional spaces

SIGNATURE COLOR

White

COLOR PHILOSOPHY

Supermodern



PANTONE 12-0642

Aurora





Luca Luca by Luca Orlandi

PROMINENT COLORS

Salmon Pink, Mauve, different shades of Green, Optical White, Red with an Orange undertone

INSPIRATION

Personal desire

SIGNATURE COLOR

Mauve

COLOR PHILOSOPHY

Pastel colors broken off with Optical White – a very fresh and sunny feeling

Zang Toi

PROMINENT COLORS

Cool – Platinum, Black and White – with a splash of hot – Jamaican Red, West Indian Pink and Caribbean Blue Sky

INSPIRATION

The cool elegance of Round Hill villas in Montego Bay versus the hot, vibrant colors of the Jamaican street market and reggae lounge

SIGNATURE COLOR

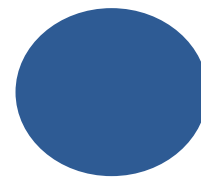
Cool Platinum – the most important accent for clothes and accessories

COLOR PHILOSOPHY

Cool, wispy colors play against hot, fun, carefree Jamaican colors



Luca Luca



PANTONE 19-4039
Delft



Zang Toi



Bradley Bayou for Halston

PROMINENT COLORS

A lot of fresh colors, including strong and cool tones like Acid Green, Chartreuse, Crystal Azure, Pale Aqua, Golden Yellow and Sky Blue

INSPIRATION

The colors and silhouettes are inspired by insects, specifically dragonflies, grasshoppers, beetles and the rainforest, which is home to so many beautiful, colorful species.

SIGNATURE COLOR

Crystal Azure. I'm doing a dress with a new Swarovski crystal in this color.

COLOR PHILOSOPHY

To use bright, vivid colors in cool tones and mix them with looks of classic Black and White. I want to create the feeling of an urban garden.



Carmen Marc Valvo

PROMINENT COLORS

Flamingo, Organic Greens, Chocolate and Coral

INSPIRATION

Tropical flora of the Polynesian Islands

SIGNATURE COLOR

Fresh Green

COLOR PHILOSOPHY

Bright colors grounded by earth tones – sultry and steamy



Halston

Carmen Marc Valvo



PANTONE 12-0642

Aurora



PANTONE 16-6339

Vibrant Green



PANTONE 17-1022

Kelp

color secrets *of the stars*

What colors do you gravitate to **WHEN YOU SHOP?**

What inspires your color choice **WHEN YOU DRESS?**

What colors **BRIGHTEN YOUR MOOD?**

Marisol Thomas Model; Founder, Sidewalk Angels Foundation

WHEN I SHOP? In the spring and summer, I wear a lot of fun, girly colors like Baby Blue and Baby Pink. In the autumn and winter, I favor earthy tones like Browns, Greens and Burnt Orange because they make me feel warm and cozy. **WHEN I DRESS?** Usually the weather and my mood, but sometimes the weather can affect my mood, so they become one-and-the-same.

TO BRIGHTEN MY MOOD? Baby Blue and Baby Pink instantly put me in a happy mood. I also use colorful accessories to perk myself up.

Diane Neal Law & Order: Special Victims Unit

WHEN I SHOP? Bright jewel tones – rich Rubies and Emerald Greens, deep Sapphire Blues, and even bright Diamond Whites. These gorgeous natural hues pull me relentlessly – occasionally against my will. I've been known to buy clothing that neither fits nor is attractive solely on the basis of its potent, vibrant color! **WHEN I DRESS?** If I'm feeling dark and private, I wear saturated Black (like all true New Yorkers). If I'm feeling powerful and grand, I head to the Purples and Deep Reds. And if I just want to be one with the world, I wear earth tones.

TO BRIGHTEN MY MOOD? Whenever my mood needs brightening or I just need to feel comforted, I invariably surround myself with pastels. These light, soothing hues make me feel happy and safe.

Rebecca Budig All My Children, Full Frontal Fashion

WHEN I SHOP? Classic colors – Black, Brown, Cream, solids – nothing too bright or overpowering. I like to have pieces that are timeless that I can wear for a few years. **TO BRIGHTEN MY MOOD?** I usually choose lighter colors such as Cream, a Light Pink (I love this color) or a Light Blue.



let's get metaphysical

colorstrology reveals the true you

We have a new equation for you: astrology *plus* numerology *plus* four decades of color research *plus* world-renowned intuitive and healer Michele Bernhardt *equals* PANTONE Colorstrology™ – also known as THE REAL YOU!

Combining arcane disciplines with spirituality and modern science, Colorstrology reveals a personal color for every day of the year. Just as your Sun Sign offers insights into your personality, you have a personal color that reflects the true you, revealing characteristics and qualities that help you to understand yourself and navigate your world.

According to Michele Bernhardt, “Your birthday color may or may not be your favorite color, but it is a color designed to nurture the real you to recognize, celebrate and honor *your own true colors*. While your color preferences may change as you evolve, your birthday color remains constant.”

Find out more about Colorstrology at www.colorstrology.com.

An exclusive sneak preview of MIX, Pantone's new online color magazine premiering October 2004...

interior landscapes

designer stella mccartney provides a retail retreat for the world weary

Forward-looking fashion designer Stella McCartney's New York City store glimmers with sophisticated tones evocative of Pantone's Alba forecast for 2005: mauve, celadon, pistachio... these luxuriant shades are the new, spirited neutrals.

Within, elegant tablescapes display decorated handbags and handmade stilettos in light-diffused colors that pop next to basic black, brown and grey.

In stark contrast to its gritty meatpacking district location, the store's palette is keyed to racks of softly toned clothes hung by color, creating a tonal dreamscape. McCartney collaborated with London-based Universal Design Studio on the plan, infusing it with personal touches that invite customers into her private world: an abstract landscape of contemporary design woven through with symbolic motifs and murals. Tranquil details evoke nature – floor contours and levels form a terrain for customers to explore, and hanging screens are evocative of long grass, which ripple in currents of air.

An intimate lounge beckons shoppers to the dressing rooms, offering the chance to relax beneath a hand-painted tree designed by Stella to “bloom” into selections of her latest accessories and lingerie. Sensuous camisoles with sharply tailored suits or cheeky pairings of denim with fluttering chiffon are McCartney trademarks.

Against a backdrop of textured white Italian tiles, mauve and other soft hues appear more vibrant.

Drawers covered in fabric atop glass shelves reinforce the palette, inviting customers to discover their treasures. Nature lover's touches like mother of pearl, jeweled necklines, beaded hobo bags and metallic leathers hark back to vintage '60s – a time when collaborative art was at its height. Whether intricate or sleek, McCartney once said, “Women love my clothes because of their details.”

www.pantoneuniverse.com



Forward-looking fashion designer Stella McCartney's New York City store glimmers with sophisticated tones evocative of Pantone's Alba forecast for 2005: mauve, celadon, pistachio...these luxuriant shades are the new, spirited neutrals. Within, elegant tablescapes display decorated handbags and handmade stilettos in light-diffused colors that pop next to basic black, brown and grey.

color continues

experts talk about spring 05

To what do you attribute the recent return to color?

Cindy Weber-Cleary Fashion Director, *InStyle*

People already have almost all the Black they need in their wardrobes. Also, these are troubling times. Colorful clothes make people feel good and forget their worries, if just for the moment. It's the same thing that makes escapist entertainment popular during wartime or economic downturns.

Michael Fink Senior Fashion Director, Saks Fifth Avenue

The positive economic climate has made everyone more adventurous in their purchases. Women have been responding to uplifting and emotional items, and certainly color becomes a great mood and wardrobe enhancement. In every city, the designers really showed women how to wear color in a new way. Suddenly Black seemed all wrong and boring.

Joan Kaner Fashion Director, Neiman Marcus

There was an immediate response to color from the customer in Spring 2004. Black was strong in the past due to the influence of modernist design.

Robert Burke Senior Fashion Director, Bergdorf Goodman

Customers have an overwhelming desire to express personal style and they have chosen to do it with color. When everyone is dressing monochromatically – whether it's all Black, all White, all Gray, all Tan – it is much more difficult to show individuality. The consumer is not interested in the uniform, no matter what the color palette.

Beth Buccini Proprietor, Kirna Zabête

We have been promoting *color, color, color* since we opened in 1999, and slowly but surely, people have caught on. People are so tired of wearing Black; women are ready for a change. I've heard it all, from "my healer told me not to wear Black" to "my husband prefers me to wear color," but I think women just feel prettier and more optimistic wearing color.

what you **MUST** have for spring 05

- Alvin Valley** The bathing suit in a beautiful array of colors
- Baby Phat by Kimora Lee Simmons** A polka dot feathered brooch lined with gold and encrusted with diamonds
- Cynthia Rowley** A silk jersey shirtdress in Rust Red
- David Rodriguez** The mother-of-pearl-encrusted tunic in rich, creamy Vachetta leather in a color I call Salerno
- Douglas Hannant** A shrunken little suede-trimmed jacket over a flouncy, lingerie-like skirt or skinny White pants
- Fusha by Marie Claudinette Jean** Our signature handbag that fuses 18th century elegance with modern Caribbean flair
- Ghost by Tanya Sarne** A sarong – in all our colors!
- Michael Vollbracht for Bill Blass** A short, flirty skirt in Pink
- Bradley Bayou for Halston** A perfect cocktail dress. For me, that means below-the-knee in a refreshing Light Blue or Green.
- Luca Luca by Luca Orlandi** An embroidered skirt with multicolored flowers lined in Salmon Pink, Mauve, Green, Optical White or Orange-Red
- Nanette Lepore** A romantic poet's blouse in a quirky shade of Lime Green
- Narciso Rodriguez** A scuba jacket and shorts in shades of Blue
- Nicole Miller** A scarf top in a multicolor print
- Peter Som** An enzyme-washed cotton voile tiered top in Celadon or Jade
- Yeohlee** A glossy White drawstring multi-functional raincoat
- Shelly Steffee** A tulle volume coat in Pale Nude
- Lilly Pulitzer by Sandi Davidson** Feminine and sexy dresses in bright multicolor prints. Pink is the most feminine color of all.
- Carolina Herrera** Very light jackets and skirts in my colors
- Carmen Marc Valvo** A sarong and bathing suit
- Derek Lam** A Nude-colored powder face silk georgette ruched skirt
- Anna Sui** A Chamois prairie skirt
- Alice Roi** A smocked broadcloth top in Watercolor Mint
- Zang Toi** Platinum snakeskin and metal stiletto heels with a major bling-bling toe ring that takes you from hot day to cool evening
- Tracy Reese** A Black cocktail dress



PANTONE 12-0642
Aurora



PANTONE 16-6339
Vibrant Green



PANTONE 17-1462
Flame



PANTONE 15-1331
Coral Reef



PANTONE 17-1022
Kelp



PANTONE 19-4039
Delft



PANTONE 15-2215
Begonia Pink



PANTONE 16-3931
Sweet Lavender



PANTONE 15-5217
Blue Turquoise



PANTONE 16-5804
Slate Gray

PANTONE Fashion Color Report Vol. 22, September 2004. Pantone, Inc., 590 Commerce Blvd., Carlstadt, NJ 07072-3098.

PANTONE Colors displayed here may not match PANTONE-identified standards. Consult current PANTONE for fashion and home color system publications for accurate color. PANTONE® and other Pantone, Inc. trademarks are the property of Pantone, Inc. © Pantone, Inc., 2004. All rights reserved.